



KONICA MINOLTA

OPTIONS PROFESSIONAL PRINTING

July 2017

Finisher	4	Accessories	20
Staple finisher FS-534	4	Large capacity tray LU-202M	21
Staple finisher FS-535	5	Large capacity tray LU-202XL	22
Staple finisher FS-531	6	Large capacity tray LU-204	23
Brochure finisher FS-612	7	Large capacity tray LU-301	24
Multipunching unit GP-501	8	Large capacity tray LU-411	25
Multipunching unit GBC Punch G2	9	Large capacity tray LU-412	26
Auto ring binder GP-502	10	Paper feed unit PF-602M	27
Folding and punching unit FD-503	11	Paper feed unit PF-703	28
Stacking unit LS-505/LS-506	12	Paper feed unit PF-706	29
Booking making unit SD-506	13	Paper feed unit PF-707	30
Booking making unit SD-513	14	Paper feed unit PF-707M	31
Perfect binder unit PB-503	15	Paper feed unit PF-711	32
Staple finisher FS-532/SD-510	16	Open stacker OT-510	33
Mount-Kit MK-737	17		
Booking making unit Plockmatic SD-500/350	18		
Watkiss Power Square 224KR	19		



STAPLE UP TO 50 SHEETS IN ONE GO

Production printing operations move up into the next level by fitting the FS-534 finishing module:

Benefit from multi-position stapling and take advantage of the added capability to produce manuals, reports and other extensive documentation. The FS-534 can staple up to 50 sheets together with high product reliability and productivity. Its other features include auto-shift sorting and grouping as well as an output capacity of up to 3,300 sheets. This intelligent finisher takes up only a minimum amount of office space. There is no longer any need to compromise when producing professional print products to satisfy customer specifications. Extending the flexibility of finishing options, this versatile combination keeps production moving at full capacity.



For example: Corner stapling for neatly compiled information

Additionally, the FS-534 can be upgraded with an optional saddle kit for booklet finishing with up to 20 sheets and a two- or four-hole punching kit – all of which also helps increase revenue.*

Key features

- 2-point and corner stapling
- Stapling up to 50 sheets
- Auto-shift; sorting and grouping
- Output for up to 3,000 sheets
- Sub tray for up to 200 sheets
- Optional: Booklets up to 20 sheets (80 images)
- Optional: Centre fold and saddle stitching
- Optional: Letter-fold 1 to 3 sheets
- Optional: 2 and 4 hole punching

Functions



Corner stapling



Two-point stapling



Booklet*



Half-fold*



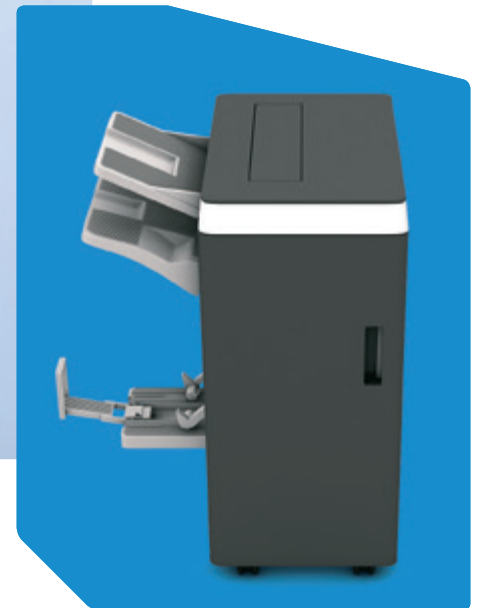
Letter fold in*



Two-hole punching



Four-hole punching



STAPLE UP TO 100 SHEETS IN ONE GO

Production printing operations move up into the next level by fitting the FS-535 finishing module:

Benefit from multi-position stapling and take advantage of the added capability to produce manuals, reports and other extensive documentation. The FS-535 can staple up to 100 sheets together with high product reliability and productivity. Its other features include and grouping as well as an output capacity of up to 3,200 sheets.

This intelligent finisher is a genuine multi-talent, taking up only a minimum amount of office space. There is no longer any need to compromise when producing professional print products to satisfy customer specifications. Extending the flexibility of finishing options, this versatile combination keeps production moving at full capacity.

Key features

- 2-point and corner stapling
- Stapling up to 100 sheets
- Auto-shift; sorting and grouping
- Output for up to 3,000 sheets
- Sub tray for up to 200 sheets
- Optional: Booklets up to 20 sheets (80 images)
- Optional: Letter-fold 1 to 3 sheets
- Optional: 2 and 4 hole punching
- Optional: Z-folding
- Optional: Post Insertion
- Optional: Job Separator



For example: Corner stapling for neatly compiled information

Offering print products of enhanced value is easy with the ability to insert mixed media sheets, preprinted covers or Z-folded sheets into a stapled document – all of which also helps increase revenue.

Functions



Corner stapling



Two-point stapling



Booklet*



Half-fold*



Letter fold in*



Two-hole punching



Four-hole punching



Sheet insertion



Cover insertion



STAPLE FINISHER

THE SMART ALTERNATIVE

The staple finisher FS-531 is the compact finishing alternative for environments where space is at a premium. It offers multi-position stapling, making these digital presses perfect choices for the production of manuals, reports and other extensive documentation. Stapling of up to 50 sheets is performed, auto-shift sorting and grouping also available; and the output capacity is for up to 3,000 sheets.

All this is complemented by optional punching and post insertion of preprinted sheets. This intelligent finisher is a genuine multi-talent, taking up only a minimum of office space. There is no longer any need to compromise;



For example: Corner stapling for neatly compiled information

rather professional print products can be produced to perfectly satisfy customer specifications. Extending the flexibility of finishing options, this versatile combination keeps smart production moving at full capacity.*

Key features

- Two-point and corner stapling
- Stapling of up to 50 sheets
- Auto-shift sorting and grouping
- Output for up to 3,000 sheets
- Sub tray for up to 100 sheets
- Optional post inserter and punch kit

Functions



Corner stapling



Two-point stapling



Auto-shift sorting



Two-hole punching



Four-hole punching



Colour cover insertion



Colour sheet insertion



ALL-IN-ONE FINISHER – THE COMPACT ALTERNATIVE

The multifunctional finisher FS-612 is the compact finishing alternative for environments where space is at a premium. It offers dependable booklet making with a capacity of up to 20 sheets (equal to 80 pages), as well as two folding functions, half-fold and multi-letter fold-in. The FS-612 can staple up to 50 sheets.

All this is complemented by optional punching and post insertion of preprinted sheets.

This intelligent finisher is a genuine multi-talent, taking up only a minimum amount of office space. There is no longer any need to compromise when producing profes-













For example: Booklet making (folding and saddle stitching) for professionally finished brochures.

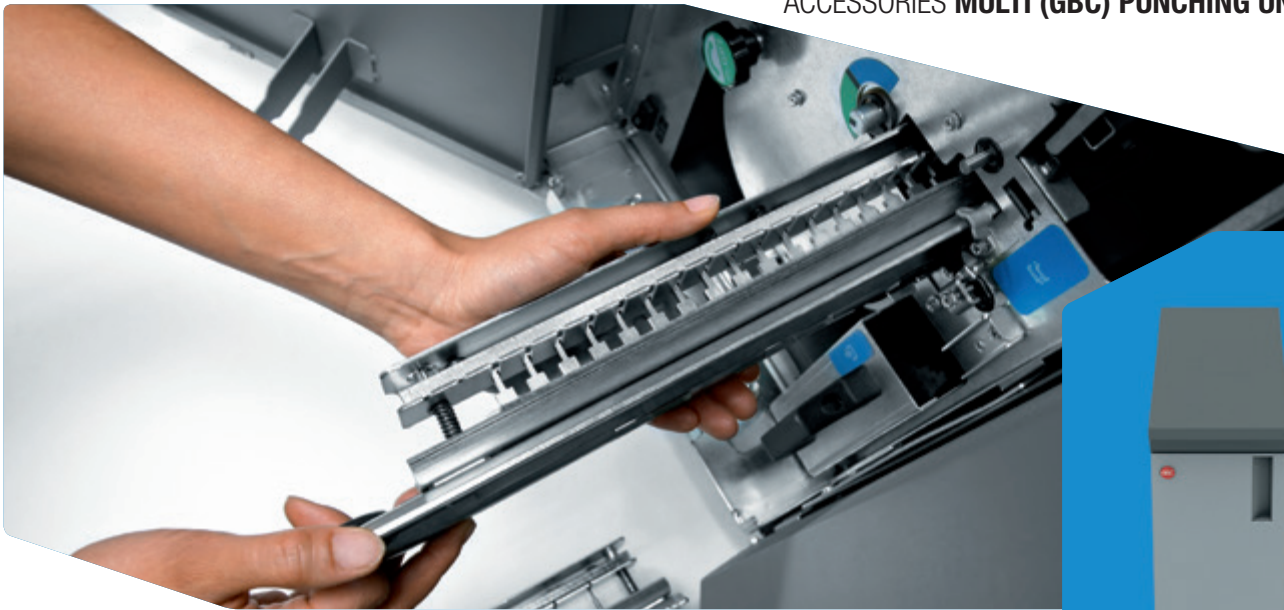
sional print products to satisfy customer specifications. Extending the flexibility of finishing options, this versatile combination keeps production moving at full capacity.

Key features

- Booklet making for up to 20 sheets (80 pages)
- Two-point and corner stapling
- Stapling of up to 50 sheets
- Centre-fold and letter fold-in
- Auto-shift sorting and grouping
- Output for up to 2,500 sheets
- Sub tray for up to 100 sheets
- Optional: post inserter and punch kit

Functions

 Corner stapling	 Two-point stapling	 Booklet	 Letter fold	 Auto-shift sorting
 Two-hole punching	 Four-hole punching	 Colour sheet insertion	 Colour cover insertion	 Half-fold



GBC PUNCHING, 100 % PRODUCTIVITY FOR RING BINDING

Representing the preparatory stage for offline spiral binding, the GP-501 GBC punching unit is a high-performance multi-hole (GBC) puncher that handles every sheet individually and matches the full system speed with its reliable mechanics. The various die sets available mean the system can operate in accordance with most popular punching schemes, such as metal-based (wire) binding or plastic (comb) binding.

The availability of these die sets for a range of different print jobs is the secret of increased versatility and helps a single print unit to meet a variety of demands from many different



For example: Multi punching for offline ring binding

customers. Switching between substrates in one and the same print job in combination with single process punching helps save time and money.

Key features

- Multi punching of A4 sheets
- User replaceable die sets for: velo bind, plastic comb, wire bind, colour coil, pro click
- Paper weight between 75 and 216 gsm
- Customised die sets available

Functions



Multi punching



A NEW GENERATION OF IN-LINE PUNCHING TECHNOLOGY

Users increasingly demand enhanced flexibility and finishing versatility for their print jobs. As a compact and cost-effective in-line punching unit, the GBC PUNCH G2 improves a printer's overall productivity, generates additional revenue and yet is easy to operate. This in-line finishing solution is less labour-intensive, means less hassle, needs less time, and is less expensive to operate than traditional off-line solutions.

In combination with Konica Minolta's production printing systems, the GBC PUNCH G2 allows producing perfectly printed, punched and ready-to-bind documents in one easy step. The GBC PUNCH G2 offers multiple-hole die sets with selectable pins for the most common professional punch patterns. It enables punching of a wide range of sheet sizes both on the long and the short edge of the sheet and includes the ability to punch tabs. It also

Key features

- Processes paper weights from 75 gsm to 300 gsm
- Punches glossy and coated stocks from A5 to SRA3
- Also punches clear covers of up to 7 mil thickness
- Supports tab punching
- New die set design
- Offers die sets with the most popular professional binding styles
- Double-punch capability for two-up sheet processing
- Informative GUI display



For example: Multi punching for offline ring binding

provides greater punching power to handle a wider variety of substrates and thicknesses. An intuitive user LED screen provides detailed information, such as die set life, and depth of punch adjustment length. With its compact design, the GBC PUNCH G2 adapts perfectly to smaller and larger businesses.

Functions



Multi punching



AUTOMATIC RING BINDING IN ONE STEP

The GP-502 boasts many smart processes working together to automatically create ring-bound books. It has the capacity to bind up to 102 sheets into one book and within only a short time can produce attractive documents of amazing quality and value. The device cannot only detect the right binding size; it also means that one binding element fits all. This makes it possible to produce ring-bound documents on demand in a single step.

The introduction of full automation has minimised the time needed to produce a ring-bound book. Advancements to printer driver settings make impositioning an automatic process. Saving time and money, print providers simply need to set up the job in the driver or via the hot folder and



For example: Ring binding for attractive project folders

watch the printed and finished book arrive at the device's output tray. All that's left to do is pick it up! Transparent covers and tab sheets can easily be added to documents, making them more attractive and creating eye catchers for customers.

Key features

- Stacking, punching and binding of books of up to 102 sheets
- Self-adjusting bind elements (one size fits all)
- Paper weight:
 - Content 75–120 gsm
 - Cover 163–216 gsm

Functions



Ring binding



THE INTELLIGENT MULTI-FOLD AND PUNCH UNIT

Equipped with the multi-fold and punch unit FD-503, bizhub production printing systems can be used to insert Z-folded technical drawings, flowcharts and similar A3 documents into comprehensive documentation in A4 size. With the FD-503, compiling even complex, professionally finished documents, merely requires a single fully automatic operation step. This saves key operators and print providers valuable time that can be used for more important tasks.

The FD-503 also speeds up the production of on-demand mailings and flyers with personalised data, and facilitates the insertion of all types of preprinted media into any print product, considerably enhancing the flexibility and the product range of the print shop. The FD-503 is used to its best advantage in combination with the booklet making unit, staple finisher or perfect binder. The folding and



For example: Four-hole punching for easy filing in a ring binder

punching unit provides six different folding schemes, two- and four-hole punching with 100% productivity, and the post insertion of preprinted sheets and covers. Naturally, manual insertion of documents and off-line finishing are also possible with this unit.

Key features

- Insertion of preprinted sheets (PI)
- 2 PI trays for 500 sheets each
- Punching (two and four holes)
- Folding (half-fold, Z-fold, gate-fold, letter fold-in, letter fold-out, double-parallel-fold)
- Sub tray for up to 200 sheets
- Optional output tray for for up to 2,500 sheets (just valid, if FD-503 is the only finisher)

Functions



Two-hole punching



Four-hole punching



Half-fold



Letter fold-in



Colour cover insertion



Sheet insertion



Letter fold-out



Gate-fold



Double-parallel-fold



Z-fold



CONVENIENT, LARGE-CAPACITY STACKING OF LOOSE PRINTED SHEETS

With the stacking unit LS-505, bizhub digital presses are perfectly equipped for full integration into environments with existing finishing facilities. Up to 5,000 sheets of shifted output can also be stacked in the trolley-mounted stacker; with an integrated paper clamp mechanism, transport is always safe. In addition to the LS-505, an additional large-capacity trolley (LC-501) is available as an option.

The trolley much enhances flexibility in the print shop: Being able to wheel the prints directly to an offline finishing or enveloping machine without having to let them dry or cool down saves key operators valuable time which can be better used for more complex tasks.



Key features

- Up to 5,000 sheets stacking capacity
- Trolley mounted stacker
- Auto-shift stacking
- Sub tray for up to 200 sheets
- Paper clamp mechanism

Functions



Trolley
stacker



Shifted
output



SADDLE-STITCHED BOOKLETS – ON DEMAND, PROFESSIONAL

Custom-size brochures with heavy covers of up to 200 gsm are just the eye catcher discerning customers are looking for. For print providers being able to offer such attractive enhancements to print products means an interesting diversification and a boost to sales and profits.

Producing professionally finished brochures in a single, fully automated operation is a breeze with the SD-506 booklet making unit. Imposition is easy via the corresponding printer driver setting or a specially created hot folder. bizhub digital presses equipped with the booklet making unit do everything else. The SD-506 handles a maximum of 50 sheets to produce booklets of up to 200 pages. Its staple positions are adjustable for precise alignment. Likewise, the saddle stitching (stitch after folding) method is highly accurate with virtually no image shift, while automat-



For example: Booklet making (folding and saddle stitching) for professionally finished brochures

ic trimming takes care of smoothing the front edge on more substantial booklets for a perfect finish. In addition, the SD-506's multi-half-fold and multi-letter fold-in functions automatically fold sets of up to five sheets once or twice.

Key features

- Booklet making of up to 50 sheets (200 pages)
- Saddle stitching
- Trimming
- Output tray for up to 50 booklets
- Multi-letter fold-in (up to five sheets)
- Multi-half-fold (up to five sheets)

Functions



Booklet
(folding
and saddle
stitching)



Booklet
with cover
insertion



Booklet
with sheet
insertion



Trimming



Multi-letter
fold-in



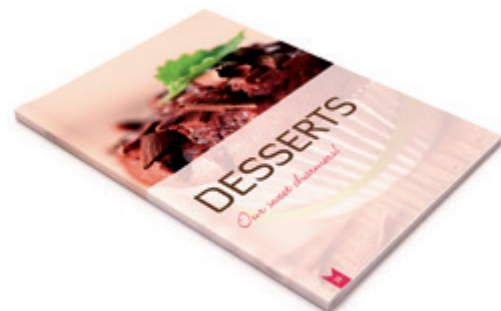
Multi-half-
fold



SADDLE-STITCHED BOOKLETS – ON DEMAND, PERFECTLY FINISHED

Custom-size brochures with heavy covers of up to 300 gsm, purified with optional creasing or square back are just the eyecatcher that discerning customers are looking for. For print providers, being able to offer such attractive enhancements to print products means an interesting diversification and a boost to sales and profits.

Booklet making (half folding and saddle stitching) for professionally finished brochures in a single, fully automated operation is a breeze with the SD-513 booklet making unit. Imposition is easy via the corresponding printer driver setting or a specially created hot folder. bizhub digital presses equipped with the booklet making unit do everything else. The SD-513 handles a maximum of 50 sheets to produce booklets of up to 200 pages. Up to four adjustable staple positions ensure precise alignment and the option of also producing booklets n-up. Furthermore, the optional slitting unit used in combination with the front



For example: Booklet making (half folding and saddle stitching) for professionally finished brochures

trimming ensures that full-bleed brochures are perfectly finished. In addition, the SD-513's multi-half-fold and multi-letter fold-in functions automatically fold sets of up to five sheets once or twice.

Key features

- Booklet making of up to 50 sheets (200 pages)
- Saddle stitching with up to 4 staples with adjustable positions
- Multi-letter fold-in (up to five sheets)
- Multi-half-fold (up to five sheets)
- Square folding* for booklets up to 50 sheets
- Slitting* and front-trimming
- Creasing* for heavyweight booklet covers, perfectly bound books* and easy folding of loose sheets

*requires additional option

Functions



Booklet (folding and saddle stitching)



Booklet with cover insertion



Booklet with sheet insertion



Trimming



Multi-letter fold-in



Multi-half-fold



Square folding



Creasing



Slitting



BOUND TO PERFECTION

Offering ideal solutions for the production of bound books, Konica Minolta's digital production presses and the PB-503 perfect binder integrate seamlessly into a fully automatic production and perfect binding workflow that requires no manual intervention but provides important time-savings over offline binding, which can only commence after all printing is done. The PB-503's hot melt gluing process makes this a unique combination that ensures unmatched production of manuals, reports and handbooks by having flexibility and productivity, paired with attractive low running costs.

Hot melt gluing requires neither complicated manual adjustments inside the equipment nor the stocking of expensive glue strips of varying widths – leaving operators free to attend to other jobs. Automatic inline trimming of covers to exact size ensures sophisticated print products. Books



For example: Perfect binding for the easy production of books

produced with the PB-503 can be custom size, down to a minimum of 139 x 139 mm*, offering high flexibility and attractive variety to meet any customer's needs and increase orders, turnover and with that profit.

Key features

- Hot melt glue binding system
- Integrated one-side trimming of cover sheets
- Books from A5 up to A4+ (307 x 221 mm)
- Books from 10 sheets up to 30 mm spine width
- Cover paper tray for up to 1,000 sheets
- Simplex and duplex printing of covers and its spine
- Sub tray for up to 200 sheets
- Stacking capacity of books, up to 6,600 sheets (two stacks of 3,300 sheets each)
- Inclusion of Z-folded sheets into bound books*
- Insertion of preprinted colour sheets into bound books*

* Partly other options required

Functions



Perfect binding



Perfect binding with Z-fold



Perfect binding with cover insertion



Perfect binding with sheet insertion



Trolley stacker for perfect bound books



ALL-IN-ONE FINISHER – THE COMPACT ALTERNATIVE

The multifunctional finisher combination FS-532 & SD-510 is the compact finishing alternative for environments where space is at a premium. The combination offers dependable booklet making with a capacity of up to 20 sheets (equal to 80 pages), as well as two folding functions, half-fold and multi-letter fold-in. The FS-532 can staple up to 100 sheets together with high product reliability and productivity, in an automated process that cuts each staple exactly to size.

All this is complemented by optional punching and post insertion of preprinted sheets.

This intelligent finisher is a genuine multi-talent, taking up only a minimum amount of office space. There is no longer any need to compromise when producing professional print



For example: Booklet making (folding and saddle stitching) for professionally finished brochures

products to satisfy customer specifications. Extending the flexibility of finishing options, this versatile combination keeps production moving at full capacity.

Key features

FS-532:

- Stapling of up to 100 sheets
- Two-point and corner stapling
- Variable staple length (cutting mechanism)
- Output for up to 3,000 sheets (A4)
- Sub tray for up to 300 sheets
- Auto-shift sorting and grouping
- Optional: post inserter and punch kit

SD-510:

- Booklet making of up to 20 sheets (80 pages)
- Saddle-stitching
- Cover sheets from 50 to 300 gsm
- Output tray for booklets
- Multi-letter fold-in (up to 3 sheets); multi-half-fold (up to 5 sheets)

Functions



Corner stapling



Two-point stapling



Two-hole punching



Four-hole punching



Booklet



Colour sheet insertion



Letter fold



Variable staple length



Auto-shift sorting



CONVENIENT CONNECTION – 3RD PARTY INTERFACE

The Mount Kit MK-737 provides seamless integration of bizhub digital presses into environments with various 3rd party finishing solutions commonly used in the high volume production sector.

The MK-737 much enhances the flexibility in the print shop: The inline connection with 3rd party finishing equipment provides customised solutions for complex tasks and thus ensures highest flexibility. MK-737 is the direct communication interface between the printer and the 3rd party finisher. It is a 100% Konica Minolta development. Enabling such flexibility in the choice of finishing equipment, the MK-737 guarantees production at full system capacity.



Key features

- Interface board to connect to 3rd party finishing solutions
- Attached to Paper Feed Unit PF-703 and/or Stacking Unit LS-505
- Inline connection with selected Konica Minolta digital presses
- Bidirectional communication

Functions



Bidirectional
interface





ENHANCED MEDIA VERSATILITY AND MODULAR FLEXIBILITY

Both centralised reproduction departments and commercial print providers will take equal interest in Konica Minolta's modular in-line booklet-making solution, the Plockmatic SD-500/350 – which is similarly attractive to larger and smaller businesses. The system is packed with a host of unique technologies and produces finished booklets with a quality to match advanced printing systems.

Answering today's demands for more media versatility from digital print, the Plockmatic SD-500/350 is designed from the ground up to handle coated, uncoated and textured media. What's more, print providers can choose from a range of cost-effective options to support and enhance specific applications.

The Plockmatic SD-500/350 in its standard configuration includes the Booklet Maker and output tray to provide set compiling, stapling, folding and stacking. Its functionality can be flexibly enhanced with the following options:

- **Face Trimmer Module:** Providing a clean document edge, the face trimmer module trims the document side opposite the spine.
- **Square Fold Module:** Adding square folding to booklets ensures a professional look and a printable spine. This gives booklets the finishing touch of a perfect bound book.
- **Rotate Crease Trim Module:** With the Plockmatic RCT Rotate Crease Trim module, professional looking, full-bleed trimmed and creased booklets can be produced on the Plockmatic SD-500/350. The creasing and bleed trimming adds value to finished booklets.
- **Cover Feeder:** This provides another pick point for preprinted covers. Colour covers can easily be combined with monochrome content. The cover feeder also allows feeding output from any other print device manually through the booklet maker, face trimmer and square fold modules.

Key features

- Modular inline design concept
- Booklet making of up to 200 pages on SD-500 (50 sheets @ 80 gsm) and 140 pages on SD-350 (35 sheets @ 80 gsm)
- Easy setup on the large display allows processing more jobs in less time
- Optional trim module for a smooth front-edge trim of the booklet
- Patented folding mechanism provides a sharp and professional look
- Cover feeder option allows adding preprinted covers of up to 250 gsm
- Optional square-fold module turns saddle-stitched booklets into professional flat square-folded books
- Automatic sheet rotation boosts productivity
- Offline use also possible

Functions



Booklet (folding and saddle stitching)



Booklet with cover insertion



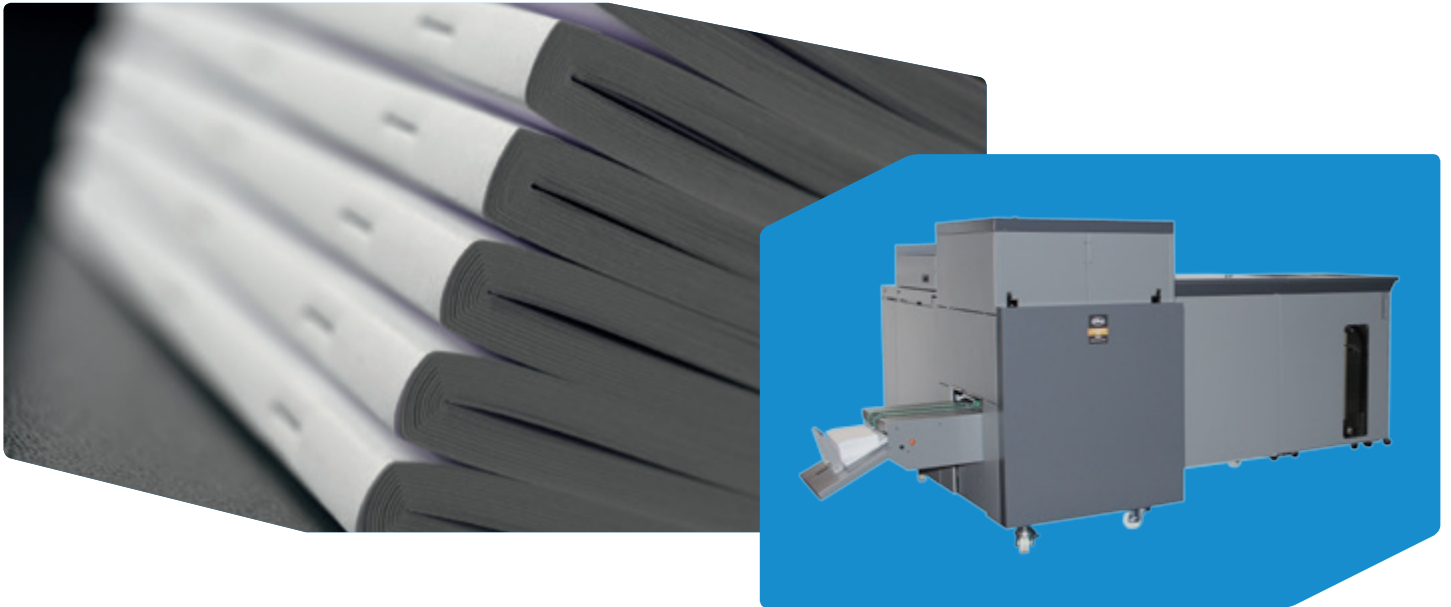
Trimming



Square folding



Slitting



PERFECT INTEGRATION PERFECT OUTPUT



First class Booklet printing in high volume environments is now enabled with the Watkiss PowerSquare 224. Bidirectional communication between the printer and the finisher brings booklet printing to the next level and allows diversification and a boost in sales and profits.

The Watkiss PowerSquare 224 is a streamlined booklet making system for high production environments. In a single machine it combines the four processes of stitching, folding, spine forming and trimming to produce SquareBack books up to 224 pages thick. It features fully automatic settings for different book size and pagination, including variable stitch leg length for varying book thickness. It is ideally suited to higher paginations or to thicker stocks delivering fast and cost effective versatility. The finished SquareBack books have the superior square-spined appearance of a perfect bound book, but with the security of a stitched spine. They lie flat and are easy to pack, stack and handle. There is no risk of loose pages and you can print on the spine. A single stitch head inserts up to six stitches in the spine of the book. Automatic stitch adjustment means a perfect stitch is produced every time, regardless of whether the book has 8 pages or 224 pages.



Key features

- Booklet making of up to 56 sheets (224 pages @ 70 gsm, 208 pages @ 80 gsm)
- Saddle stitching with variable staple length
- 1–6 stitches evenly spaced on the spine of the book
- Front-trimming; optional full bleed trimming available
- Square folding
- Automatic sheet rotation for optimum productivity
- Offline usage possible

Functions



Booklet (folding and saddle stitching)



Booklet with cover insertion



Booklet with sheet insertion



Trimming



Square folding

KONICA MINOLTA ACCESSORIES

Overview

Finisher	LU-202/202m Large capacity tray	LU-202XL Large capacity tray	LU-204 Large capacity tray	LU-205 Large capacity tray	LU-301 Large capacity tray	LU-303 Large capacity tray	LU-411 Large capacity tray	LU-412 Large capacity tray	PF-602m Paper feed unit	PF-703 Paper feed unit	PF-706 Paper feed unit	PF-707 Paper feed unit	PF-707m Paper feed unit	PF-709 Paper feed unit	PF-711 Paper feed unit	OT-502 (Open stacker)	OT-507 (Open stacker)	OT-508 (Open stacker)	OT-510 (Open stacker)
System																			
bizhub PRO 958				●		●												●	
bizhub PRO 1100							●	●						●			●		
bizhub PRESS 1052e									●	●									
bizhub PRESS 1250e									●	●									
bizhub PRESS 1250eP									●	●									
bizhub PRESS 2250P									●	●									
bizhub PRO C754e			●		●														
AccurioPrint C2060L	●	●																	●
AccurioPrint C2060	●	●							●			●							●
AccurioPrint C2070	●	●							●			●							●
bizhub PRO C71hc	●								●			●				●			
AccurioPress C2060	●	●							●			●							●
AccurioPress C2070	●	●							●			●							●
AccurioPress C2070P	●	●							●			●							●
bizhub PRESS C71hc	●								●			●				●			
AccurioPress C6085													●		●				
AccurioPress C6100													●		●				



LARGE CAPACITY TRAY LU-202/202m

The large capacity tray LU-202m gives print providers the option of upgrading AccurioPrint or AccurioPress colour production printing systems with an additional 2,500 sheets paper capacity.

The maximum paper capacity of up to 4,250 sheets provides users with the capability to print high volume production runs without stops, waiving the need for operators to spend time and effort on paper refilling. Reflecting the demands of smaller printing premises, the LU-202m with its compact design and attractive low investment has a small footprint and is the perfect choice for print providers with limited space and budget.



Key features

- One paper magazine
- Paper capacity of up to 2,500 sheets
- Paper weight from 64 to 300 gsm
- Standard paper sizes B5–SRA3
- Min. paper size of 210 x 182 mm
- Max. paper size of 330 x 487 mm

Functions



Two-sided
printing/
duplex



One-sided
printing



Mixmedia
white/colour
sheets from
different trays



Mixplex one-/
two-sided
during
operation



Combined
mixplex/
mixmedia



LARGE CAPACITY TRAY LU-202XL

The large capacity tray LU-202XL gives print providers the option of upgrading AccurioPrint or AccurioPress colour production printing systems with an additional 2,500 sheets paper capacity.

The maximum paper capacity of up to 4,250 sheets provides users with the capability to print high volume production runs without stops, waiving the need for operators to spend time and effort on paper refilling. Reflecting the demands of smaller printing premises, the LU-202XL with its compact design and attractive low investment has a small footprint and is the perfect choice for print providers with limited space and budget. Capable of feeding maximum 1,000 sheets of 750 mm long size. This facilitates a volume printing of book covers and A3 three-fold pamphlets.



Key features

- One paper magazine
- Paper capacity of up to 2,500 sheets (182–487 mm)
- Paper capacity of up to 1,000 sheets (487–750 mm)
- Paper weight from 64 to 300 gsm
- Standard paper sizes B5–SRA3
- Min. paper size of 210 x 182 mm (optional 90 x 148 mm with Envelope-Kit)
- Max. paper size of 330 x 750 mm

Functions



Two-sided
printing/
duplex



One-sided
printing



Mixplex one-/
two-sided
during
operation



Combined
mixplex/
mixmedia



Mixmedia
white/colour
sheets from
different trays



LARGE CAPACITY TRAY LU-204

The large capacity tray gives print providers the option of upgrading bizhub colour printers with an additional 2,500 sheets.

The maximum paper capacity of up to 6,150 sheets provides users with the capability to print high volume production runs without stops, waiving the need for operators to spend time and effort on paper refilling.

Reflecting the demands of smaller printing premises, the LU-204 with its compact design and attractive low investment has a small footprint and is the perfect choice for print providers with limited space and budget.



Key features

- 1 magazine
- Paper capacity of up to 2,500 sheets
- Paper weight from 52 to 256 gsm
- Standard paper sizes A4-SRA3

Functions



Two-sided
printing/
duplex



One-sided
printing



Mixplex one-/
two-sided
during
operation



Combined
mixplex/
mixmedia



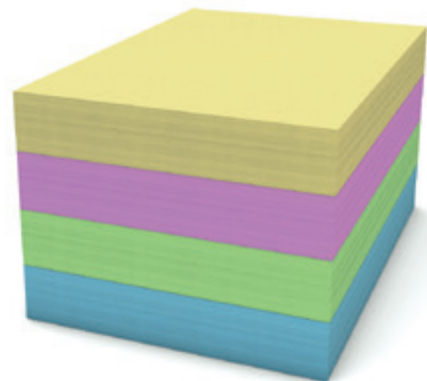
Mixmedia
white/colour
sheets from
different trays



LARGE CAPACITY TRAY LU-301

The large capacity cassette LU-301 is a module that upgrades bizhub digital printer with an additional paper capacity of 3,000 A4 sheets. The resulting total capacity of 6,650 sheets creates a print station capable of high volume production runs. This waives the need for operator input and reduces paper refill times.

Reflecting the demands of smaller printing premises, the LU-301 with its compact design and attractive low investment has a small footprint and is the perfect choice for print providers where space and budget are limited.



Key features

- Paper capacity of up to 3,000 sheets
- Paper weight from 52 to 256 gsm
- Standard paper size A4

Functions



Two-sided
printing/
duplex



One-sided
printing



Mixplex one-/
two-sided
during
operation



Combined
mixplex/
mixmedia



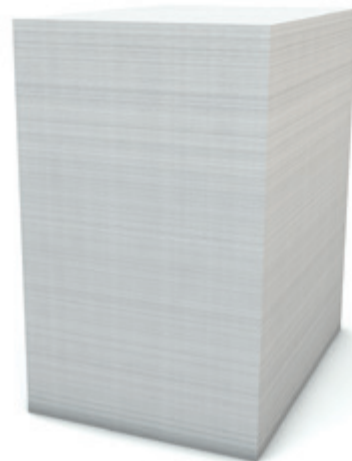
Mixmedia
white/colour
sheets from
different trays



LARGE CAPACITY TRAY LU-411

The large capacity tray LU-411 is a module that upgrades bizhub PRO digital presses with an additional paper capacity of 4,500 A4 sheets. The resulting total capacity of 7,500 sheets creates a print station capable of high volume production runs. This waives the need for operator input and reduces paper refill times.

Reflecting the demands of smaller printing premises, the LU-411 with its compact design and attractive low investment has a small footprint and is the perfect choice for print providers where space and budget are limited.



Key features

- Paper capacity of up to 4,500 sheets
- Paper weight from 40 to 300 gsm
- Standard paper size A4
- Min. paper size 250 x 176 mm
- Max. paper size 314 x 229 mm

Functions



Two-sided
printing/
duplex



One-sided
printing



Mixplex one-/
two-sided
during
operation



Combined
mixplex/
mixmedia



Mixmedia
white/colour
sheets from
different trays



LARGE CAPACITY TRAY LU-412

The large capacity tray LU-412 gives print providers the option to extend the paper capacity of their bizhub digital press with an additional 4,000 sheets.

When equipped with the total capacity of 7,000 sheets, the bizhub digital press provides the technical capability to print high volume production runs without stops, waiving the need for operators to spend time and effort on paper refilling. Not only can the Konica Minolta digital press thus be installed with a specification to handle high volume print jobs and big paper sizes, easily and dependably. It also offers a robust, high-performance design at an affordable investment!



Key features

- Paper capacity of up to 4,000 sheets
- Paper weight from 40 to 300 gsm
- Standard paper sizes up to SRA3
- Min. paper size 195 x 203 mm
- Max. paper size 324 x 483 mm

Functions



Two-sided
printing/
duplex



One-sided
printing



Mixplex one-/
two-sided
during
operation



Combined
mixplex/
mixmedia



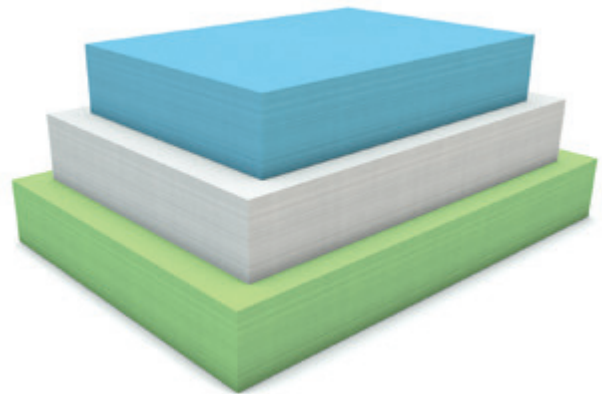
Mixmedia
white/colour
sheets from
different trays



PROFESSIONAL AIR ASSIST PAPER FEEDING TECHNOLOGY

The PF-602 implements Konica Minolta's proven air assist friction feeding technology, and thus ensures high reliability in feeding paper to the printer. Adding one paper feed unit to the system extends the paper capacity by up to 6,000 sheets and adds two trays to the available paper sources.

A more than impressive overall capacity of up to 7,500 sheets (PFU plus main body trays) from 5 trays together with the intelligent paper catalogue represents a robust and powerful basis for long print runs both with and without varying media requirements. The optional heating unit makes printing on offset preprinted or coated stock as well as in high humidity zones even smoother.



Key features

- Two magazines
- Paper capacity of up to 6,000 sheets
- Paper weight from 64 to 300 gsm (lower tray)
- Standard paper sizes B4-SRA3
- Min. paper size 100 x 148 mm (lower tray)
- Max. paper size 330 x 487 mm

Functions



Two-sided
printing/
duplex



One-sided
printing



Mixplex one-/
two-sided
during
operation



Combined
mixplex/
mixmedia



Mixmedia
white/colour
sheets from
different trays



PROFESSIONAL VACUUM PAPER FEEDING TECHNOLOGY

The PF-703 offers the most professional way to feed paper to the printer: This unit implements tried and trusted vacuum feeding technology.

Up to three paper feed units can be added to create custom configurations with massive input capacities of up to 5,000 sheets using 3 trays per unit. A more than impressive overall capacity of up to 18,000 sheets (PFU plus main body trays) from 11 trays together with the intelligent paper catalogue build a robust and powerful basis for long print runs both with and without varying media requirements. The optional heating unit makes it even easier to print on offset preprinted or coated stock as well as in high humidity zones.



Key features

- Three paper magazines with air-suction technology
- Paper capacity of up to 5,000 sheets
- Paper weight from 40 to 350 gsm
- Standard paper sizes A6 to A3+
- Min. paper size 95 x 139 mm
- Max. paper size 324 x 483 mm

Functions



Two-sided
printing/
duplex



One-sided
printing



Mixplex one-/
two-sided
during
operation



Combined
mixplex/
mixmedia



Mixmedia
white/colour
sheets from
different trays



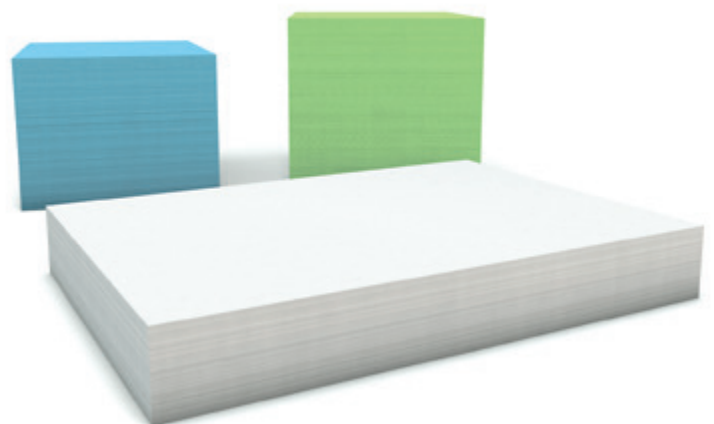
RELIABLE FRICTION FEED TECHNOLOGY

The PF-706 is a professional specification paper feed unit with highly reliable friction feed technology, which gives customers three additional paper trays, each with a capacity of 2,000 sheets.

Adding the PF-706 to a bizhub digital press raises the stakes by delivering an impressive 9,000-sheet maximum paper capacity (PFU plus main trays). This gives the operator the choice of five different paper sources, all of which can process different types of media. The mixed media function offers the kind of dependability in operation, which guarantees 100 % productivity for paper weights of up to 216 gsm.

Key features

- Three paper magazines
- Paper capacity of up to 6,000 sheets
- Paper weight from 40 to 350 gsm
- Standard paper sizes A5 to A3+ (SRA3)
- Min. paper size 95 x 139 mm
- Max. paper size 324 x 463 mm



Functions



Two-sided
printing/
duplex



One-sided
printing



Mixplex one-/
two-sided
during
operation



Combined
mixplex/
mixmedia



Mixmedia
white/colour
sheets from
different trays



PROFESSIONAL VACUUM PAPER FEEDING TECHNOLOGY

The PF-707m offers the most professional way to feed paper to the printer: This unit implements tried and trusted vacuum technology.

A paper feed unit can be added to create custom configurations with extensive input capacities of up to 4,630 sheets using three trays and with the intelligent paper catalogue build a robust and powerful basis for long print runs both with and without varying media requirements. The optional heating unit makes it even easier to print on offset preprinted or coated stock as well as in high humidity zones.



Key features

- Includes high-speed document feeder for dual scanning and copying
- Three paper magazines
- Air suction feeding
- Paper capacity of up to 4,630 sheets
- Paper sizes from 100 x 140 mm to 330 x 487 mm
- Capacity to feed various types of media
- Paper weights from 52 to 400 gsm
- Optional heating unit

Functions



Two-sided printing/duplex



One-sided printing



Mixplex one-/two-sided during operation



Combined mixplex/mixmedia



Mixmedia white/colour sheets from different trays



Air-suction paper feed



Air assist



Envelope printing



PROFESSIONAL VACUUM PAPER FEEDING TECHNOLOGY

The PF-707 offers the most professional way to feed paper to the printer: This unit implements tried and trusted vacuum technology.

One paper feed unit can be added to create custom configurations with extensive input capacities of up to 4,630 sheets using three trays. A more than impressive overall capacity of up to 6,130 sheets (PFU plus main body trays) from five trays together with the intelligent paper catalogue build a robust and powerful basis for long print runs both with and without varying media requirements. The optional heating unit makes it even easier to print on offset preprinted or coated stock as well as in high humidity zones.



Key features

- Three paper magazines
- Air suction feeding
- Paper capacity of up to 4,630 sheets
- Paper sizes from 100 x 140 mm to 330 x 487 mm
- Capacity to feed various types of media
- Paper weights from 62 to 300 gsm
- Optional heating unit

Functions



Two-sided
printing/
duplex



One-sided
printing



Mixplex one-/
two-sided
during
operation



Combined
mixplex/
mixmedia



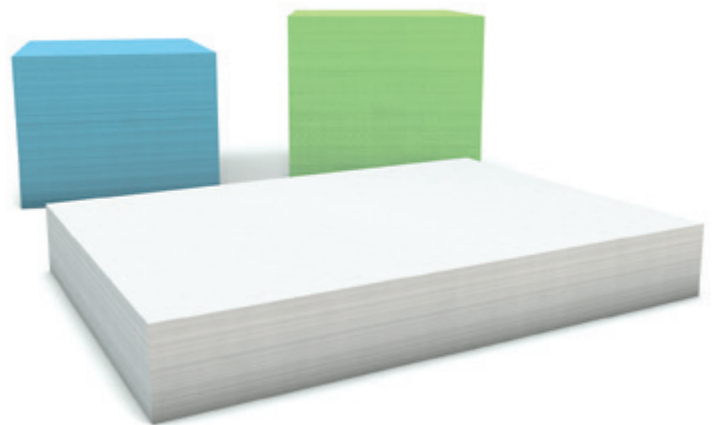
Mixmedia
white/colour
sheets from
different trays



RELIABLE FRICTION FEED TECHNOLOGY

The PF-709 is a professional specification paper feed unit with highly reliable friction feed technology, which gives customers three additional paper trays, each with a capacity of 2,000 sheets.

Adding the PF-709 to a bizhub digital press raises the stakes by delivering an impressive 9,000-sheet maximum paper capacity (PFU plus main trays). This gives the operator the choice of five different paper sources, all of which can process different types of media. The mixed media function offers the kind of dependability in operation, which guarantees 100 % productivity for paper weights of up to 216 gsm.



Key features

- Three paper magazines
- Paper capacity of up to 6,000 sheets
- Paper weight from 40 to 350 gsm
- Standard paper sizes A5 to A3+ (SRA3)
- Min. paper size 95 x 139 mm
- Max. paper size 324 x 463 mm

Functions



Two-sided
printing/
duplex



One-sided
printing



Mixplex one-/
two-sided
during
operation



Combined
mixplex/
mixmedia



Mixmedia
white/colour
sheets from
different trays



PROFESSIONAL VACUUM PAPER FEEDING TECHNOLOGY

The PF-711 offers the most professional way to feed paper to the printer: This unit implements tried and trusted vacuum technology.

The PF-711 has an extensive input capacities of up to 4,630 sheets using three trays and two more paper units (PF-707m) can be added for a more than impressive overall capacity of up to 13,890 sheets from nine trays together with the intelligent paper catalogue build a robust and powerful basis for long print runs both with and without varying media requirements. The optional heating unit makes it even easier to print on offset preprinted or coated stock as well as in high humidity zones. The PF-711 is equipped with an automatic document feeder that turns a bizhub digital press into a high-performance scanner and copier.

Key features

- Includes document feeder for scanning and copying
- Three paper magazines
- Air suction feeding
- Paper capacity of up to 4,630 sheets
- Paper sizes from 100 x 140 mm to 330 x 487 mm
- Capacity to feed various types of media
- Paper weights from 52 to 400 gsm
- Optional heating unit



Functions



Two-sided
printing/
duplex



One-sided
printing



Mixplex
one-/
two-sided
during
operation



Combined
mixplex/
mixmedia



Mixmedia
white/colour
sheets from
different trays



Air-suction
paper feed



Air assist



Envelope
printing



OPEN STACKER OT-510

THE COMPACT ALTERNATIVE

The multifunction finisher combination FS-532 & SD-510 is the compact finishing alternative for environments where space is at a premium. The option offers dependable booklet making with a capacity of up to 4,200 sheets. All this is complemented by optional punching and post insertion of preprinted sheets.

This option perfectly fits for customers, who have already invested in several finishing options and want to do offline finishing.



Key features

- Output for up to 4,200 sheets (A4)
- Sub tray for up to 300 sheets
- Auto-shift sorting and grouping
- Optional: Banner output tray MK-740

Functions



Auto-shift
sorting

